

**GENEVA
GRADUATE
INSTITUTE**

INSTITUT DE HAUTES
ÉTUDES INTERNATIONALES
ET DU DÉVELOPPEMENT
GRADUATE INSTITUTE
OF INTERNATIONAL AND
DEVELOPMENT STUDIES

**iheiddown:
A Thesis Template
For the Geneva Graduate Institute
in R Markdown**

THESIS

submitted at the Geneva Graduate Institute
in fulfillment of the requirements of the
Your Department

by

Author Name

Thesis No. 12345

**Supervisor: Gandalf the Grey
Second Reader: Galadriel
External Examiner: Aragorn II Elessar**

**Geneva
2022**

**iheiddown:
A Thesis Template
For the Geneva Graduate Institute
in R Markdown**

© 2022 NAME

INSTITUT DE HAUTES ETUDES INTERNATIONALES ET DU DEVELOPPEMENT
GENEVA GRADUATE INSTITUTE

**iheiddown:
A Thesis Template
For the Geneva Graduate Institute
in R Markdown**

THESIS
submitted at the Geneva Graduate Institute
in fulfillment of the requirements of the
Your Department

by

Author Name

Thesis No. 12345

**Geneva
2022**

PLACEHOLDER: REPLACE PAGE WITH A DOCUMENT PROVIDED
BY PHD SECRETARIAT

INSTITUT DE HAUTES ETUDES INTERNATIONALES ET DU DEVELOPPEMENT
GENEVA GRADUATE INSTITUTE

RESUME / ABSTRACT

This *RMarkdown* template is for writing a Graduate Institute thesis. This template's sample content include illustrations of how to write a thesis in *RMarkdown*, and largely follows the structure from this R Markdown workshop. Congratulations for taking a step further into the lands of open, reproducible science by writing your thesis using a tool that allows you to transparently include tables and dynamically generated plots directly from the underlying data. Hip hooray!

For you

Acknowledgements

This is where you normally thank your advisor, colleagues, family and friends, as well as funding and institutional support. In our case, we will acknowledge here those who developed the ideas and tools that allow us to push open science a little step further by writing plain-text, transparent, and reproducible theses in *RMarkdown*.

First, we thank Leslie Lamport for originally creating L^AT_EX, and Frank Mittelbach, Chris Rowley, and Rainer Schöpf for their ongoing development. Thank you to John Gruber for inventing the original version of Markdown, to John MacFarlane for creating Pandoc (<http://pandoc.org>), which converts Markdown to a large number of output formats including L^AT_EX.

Next, we are grateful to Ross Ihaka and Robert Gentleman from the University of Auckland for developing **R** from John Chambers' **S** programming language. **R** is used to Thank you also to JJ Allaire, the founder and CEO of RStudio, and Hadley Wickham, mastermind of the tidyverse suite of packages, without which we'd all just given up and done data science in Python instead.

Lastly, thank you to Yihui Xie for creating knitr which introduced *RMarkdown* as a way of embedding code in Markdown documents, and bookdown which added tools for technical and longer-form writing. Chester Ismay created the *thesisdown* package which, together with *rticles* and *memor*, served as inspiration for this package. And special thanks to Ulrik Lyngs, who converted John McManigle and Sam Evans' adaptations of Keith Gillow's original L^AT_EX template for writing an Oxford University DPhil thesis into an *oxforddown RMarkdown* template that serves as the basis for this skeleton.

These enormous contributions make theses and dissertations easier to write, share, and replicate.

James Hollway
Geneva Graduate Institute
13 June 2020

Contents

Preface	1
Why use it?	1
Who should use it?	2
1 Introduction	3
1.1 Commenting	3
1.2 Line breaks, paragraphs, and spacing	3
1.3 Quotation	5
1.4 Lists	5
1.5 Footnotes	6
2 Theory	7
2.1 Referencing	7
2.1.1 Assembling a bibliography	7
2.1.2 Citing with <code>citr</code>	8
2.1.3 Tips for bibliographies	9
3 Methods	10
3.1 Writing up math	10
3.1.1 In-line expressions	10
3.1.2 Displayed expressions	10
3.1.3 Model equations	11
3.1.4 Symbols	11
3.2 Inline code	11
4 Results	13
4.1 An intro to R chunks	13
4.2 Including external figures	15
4.2.1 Numbering and labelling figures	15

CONTENTS

4.2.2	Referencing figures	15
4.2.3	Resizing figures	16
4.2.4	Placing figures	17
4.3	Loading and exploring data	18
4.3.1	Importing data	18
4.3.2	Manipulating and summarising data	20
4.3.3	Creating plots	22
4.3.4	Tabulating inferential results	24
4.3.5	Tables from external data	25
5	Conclusion	26
5.1	Using iheiddown for proposals	26
5.2	Additional resources	27
5.3	Anything else?	28
	Appendix: The Echoes of the Code	29
	Appendix: The Echoes of the Code redux	32
	References	33

List of Figures

2.1 Citing with citr	9
4.1 Chunk parts	14
4.2 IHEID logo	15
4.3 Subdiv. graph	16
4.4 Subdiv. graph flipped	17
4.5 Mean Delays by Airline	23

List of Tables

4.1	Max Delays by Airline	21
4.2	Correlation of Inheritance Factors for Parents and Child	25

List of Abbreviations

IMF	International Monetary Fund
NATO	North Atlantic Treaty Organization
UN	United Nations
UNICEF	United Nations Children's Fund
WHO	World Health Organization
WTO	World Trade Organization

Preface

Welcome to the *RMarkdown* template for writing masters theses or PhD dissertations at the Geneva Graduate Institute. This sample content is based on the IHEID LaTeX dissertation template and the R `bookdown` package.

But hopefully it will provide a nicer interface for those that have never used $\text{T}_{\text{E}}\text{X}$ or $\text{L}^{\text{A}}\text{T}_{\text{E}}\text{X}$ before.

Using *R Markdown* will also allow you to easily keep track of your analyses in **R** chunks of code, with the resulting plots and output included as well.

The hope is this *R Markdown* template gets you in the habit of doing reproducible research, which benefits you long-term as a researcher, but also will greatly help anyone that is trying to reproduce or build onto your results down the road.

Hopefully, you won't have much of a learning period to go through and you will reap the benefits of a nicely formatted thesis.

The use of $\text{L}^{\text{A}}\text{T}_{\text{E}}\text{X}$ in combination with *Markdown* is more consistent than the output of a word processor, much less prone to corruption or crashing, and the resulting file is smaller than a Word file. While you may have never had problems using Word in the past, your thesis is likely going to be about twice as large and complex as anything you've written before, taxing Word's capabilities.

After working with *Markdown* and **R** together for a few weeks, we are confident this will be your reporting style of choice going forward.

Why use it?

RMarkdown creates a simple and straightforward way to interface with the beauty of $\text{L}^{\text{A}}\text{T}_{\text{E}}\text{X}$.

Packages have been written in **R** to work directly with $\text{L}^{\text{A}}\text{T}_{\text{E}}\text{X}$ to produce nicely formatting tables

0. List of Abbreviations

and paragraphs. In addition to creating a user friendly interface to \LaTeX , *RMarkdown* also allows you to read in your data, to analyze it and to visualize it using **R** functions, and also to provide the documentation and commentary on the results of your project.

Further, it allows for **R** results to be passed inline to the commentary of your results.

You'll see more on this later.

Who should use it?

Anyone who needs to analyses data, include lots of tables or figures, complex cross-references, mathematical equations, or just cares about the final appearance of their document should use *RMarkdown*. Therefore, while this template should be of particular interest to those planning to use **R** for their dissertations, the user-friendly nature of writing *Markdown* coupled with the extraordinary flexibility of \LaTeX

(and the power of **R**) should make *useful for everyone writing theses or dissertations at the Geneva Graduate Institute*.

Chapter 1

Introduction

Here is a brief introduction into using *RMarkdown*. *Markdown* is a simple formatting syntax for authoring HTML, PDF, and MS Word documents. *RMarkdown* provides the flexibility of *Markdown* with the implementation of **R** input and output. For more details on using *RMarkdown* see <https://rmarkdown.rstudio.com>.

1.1 Commenting

As you can see in the final PDF, the above comments are not printed. This can be hugely helpful for keeping notes for yourself right where you need them. I'll be using them to add some notes for you about the functionality in this package.

1.2 Line breaks, paragraphs, and spacing

Generally, it's useful to write each sentence (or part of a new sentence) on a new line. This aids in readability—for you writing, but also for your readers, who will appreciate short, succinct prose. Any text written in the line immediately following will be included in the same paragraph. You do not need to add a space after finishing a line. This will be added automatically.

If you want to start a new paragraph, all you need to do is hit enter/return twice before continuing writing. The empty line signals that the paragraph is over, and we should start a new one.

Be careful with your spacing in *Markdown* documents though. While whitespace largely is ignored, it does at times give *Markdown* signals as to how to proceed. For example, at the end of this line, I'm going to add several white spaces.

1. Introduction

And then I'm going to continue.

As you will see in the final PDF, while the paragraph structure is maintained, the standard text justification is broken.

As a habit, try to keep everything left aligned whenever possible, especially as you type a new paragraph. In other words, there is no need to indent basic text in the Rmd document (in fact, it might cause your text to do funny things if you do).

If for some reason you need some extra space between paragraphs, you can use `\vfill`. You can force a new page with `\newpage`.

1. Introduction

1.3 Quotation

Normal in-text quotations are simple enough. Just “enclose the quotation in speech marks”. \LaTeX will do the hard work of parsing out what is the start and end of the quote.

If you wish to include longer quotations as a block quote, just start a new paragraph with a `>` symbol preceding the first line.

This signals that the quotation should be indented from both sides. I can add sentences to the paragraph, and to conclude the block quotation. . .

I just start another paragraph. If you would like fancier block quotes, just raise this as an issue on GitHub.

1.4 Lists

It's easy to create a list. It can be unordered like

- Item 1
- Item 2

or it can be ordered like

1. Item 1
2. Item 2

Note that I intentionally mislabeled Item 2 as number 4.

Markdown automatically figures this out!

You can put any numbers in the list and it will create the list.

Check it out below.

To create a sublist, just indent the values a bit (at least four spaces or a tab).

(Here's one case where indentation is key!)

1. Item 1
2. Item 2
3. Item 3

1. *Introduction*

- Item 3a
- Item 3b

1.5 **Footnotes**

As you write, you might want to footnote something.¹ Alternatively, you can specify the footnote yourself.²

¹The footnote will be in a smaller font and enumerated and placed appropriately.

²And then write the text out at the bottom of the page/document.

Chapter 2

Theory

2.1 Referencing

Your dissertation, and perhaps your theory/literature review chapter in particular, will likely have plenty of citations. Indeed, you will probably accumulate an armful of sources. This section outlines how to assemble a bibliography and cite in text.

2.1.1 Assembling a bibliography

RMarkdown uses *pandoc* to build its bibliographies. ¹ *pandoc* (and \LaTeX) rely on one or more external bibliography databases that contain all the bibliographic information that you may use in your thesis. In the end though, when it builds your bibliography, it will only create an entry for those items that you actually cite.

The required format for these bibliography database files is **BibTeX**. **BibTeX** files are stored in a plain text file with the `.bib` extension. See this link for more. I have placed an example file under the `/bib/` folder. You can simply replace this with your own file under the same name, or point to your file instead by changing the correct field in the YAML header in the main `.Rmd` file.

There are a variety of tools available for creating these files. For example, you may want to consider using the free and easy-to-use tool called Zotero.

Our wonderful librarians have created documentation on how to use Zotero.

¹One nice feature of this is that, unlike using straight \LaTeX , you won't need to do a second compile to load in references.

2. Theory

2.1.2 Citing with `citr`

After creating your personal bibliographic database, you can cite these entries in your dissertation with an `@` symbol, followed by the correct, unique identifier for that entry. Let's take for example the `Darwin1859` entry that appears in the `references.bib` file in the `bib` folder.

Standard parenthetical citations can be indicated with square brackets (Darwin 1859). Without them, you will get a text citation. For example, Darwin (1859) said some smart things. If you wish to drop the name, say because you wish to replace it with something more fitting in the context, you could say that Darwin's (1859) theory of evolution is brilliant.

To cite multiple entries together, you can just concatenate the entries, separated by semicolons. For example, this package (Hollway 2020) very much builds and relies upon the excellent work of others (Xie 2016; Solomon 2020).

You can also add page numbers and notes. For example, you should start reading a book from the first page (Darwin 1859, p. 1), though often all of them are good (Darwin 1859, pp. 1-502). These need not be page numbers, but could be other suffixes. You can add prefixes too (see Xie 2016; cf. Solomon 2020).

A more efficient way for entering these into your documents is by using the R package `citr`. The `citr` package includes an 'addin' for RStudio that you can bind a keyboard shortcut to, and that raises a search window where you can type author, year, or title information in to find the required entry/ies. It is enormously useful, particularly as your bibliography gets larger. If you'd like to learn more, see the README of its GitHub account.

2. Theory

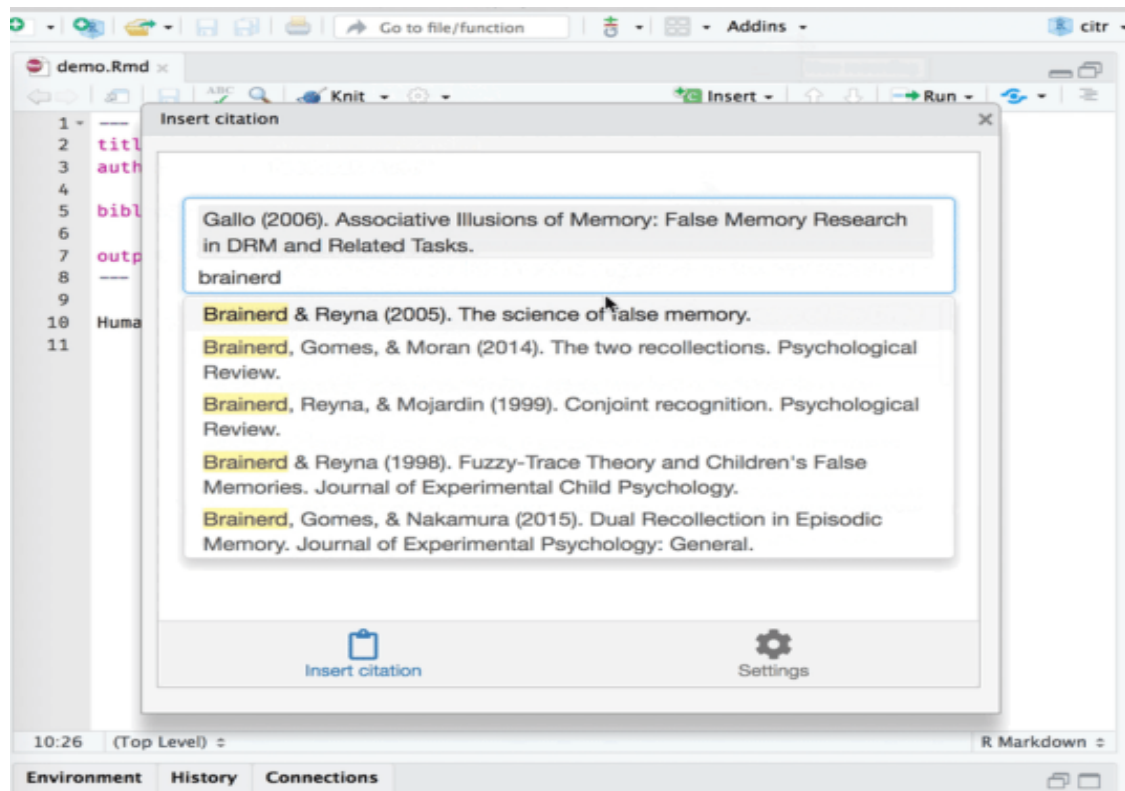


Figure 2.1: Citing with citr

2.1.3 Tips for bibliographies

- Like with thesis formatting, the sooner you start compiling your bibliography for something as large as thesis, the better. Typing in source after source is mind-numbing enough; do you really want to do it for hours on end in late May? Think of it as procrastination.
- The cite key (a citation's label) needs to be unique from the other entries.
- When you have more than one author or editor, you need to separate each author's name by the word "and" e.g. Author = {Noble, Sam and Youngberg, Jessica},.
- Bibliographies made using BibTeX (whether manually or using a manager) accept L^AT_EX markup, so you can italicize and add symbols as necessary.
- To force capitalization in an article title or where all lowercase is generally used, bracket the capital letter in curly braces.
- You can add an iheiddown citation.²

²Hollway (2020)

Chapter 3

Methods

Your methods section will discuss the approach you will take for your dissertation.

3.1 Writing up math

\TeX is the best way to typeset mathematics. Donald Knuth designed \TeX when he got frustrated at how long it was taking the typesetters to finish his book, which contained a lot of mathematics. One nice feature of *RMarkdown* is its ability to read LaTeX code directly.

If you are writing a thesis that includes equations, then this section will be useful. If not, you can just skip over or delete this section (you can always come back to it later by creating a new templated folder or looking at this chapter on the GitHub account online.)

3.1.1 In-line expressions

First, we can include short equations into our normal text by enclosing \LaTeX equations in dollar signs. So $\text{\sum}_{i=1}^N i$ will read $\sum_{i=1}^N i$.

3.1.2 Displayed expressions

\LaTeX also includes the option to present mathematical expressions on one or more separate lines:

$$\pi(\theta|X_1 < y_1, \dots, X_n < y_n) \propto \pi(\theta) \prod_{i=1}^n \int_{-\infty}^{y_i} \exp\left(-\frac{(x-\theta)^2}{2\sigma^2}\right) dx$$

$$\sum_{j=1}^n (\delta\theta_j)^2 \leq \frac{\beta_i^2}{\delta_i^2 + \rho_i^2} \left[2\rho_i^2 + \frac{\delta_i^2 \beta_i^2}{\delta_i^2 + \rho_i^2} \right] \equiv \omega_i^2$$

Another equation:

3. Methods

$$\det \begin{vmatrix} c_0 & c_1 & c_2 & \dots & c_n \\ c_1 & c_2 & c_3 & \dots & c_{n+1} \\ c_2 & c_3 & c_4 & \dots & c_{n+2} \\ \vdots & \vdots & \vdots & & \vdots \\ c_n & c_{n+1} & c_{n+2} & \dots & c_{2n} \end{vmatrix} > 0$$

3.1.3 Model equations

One hassle is writing \LaTeX equations for the models you run in your analysis. Fortunately, there is an app (sic: package) for that! `{Equationomatic}` takes some of the pain out of that chore. More details can be found here.

3.1.4 Symbols

Many of the symbols you will need can be found on the Comprehensive \LaTeX Symbol Guide.

Exponent or Superscript: O^-

Subscript: CH_4

To stack numbers or letters as in Fe_2^{2+} , the subscript is defined first, and then the superscript is defined.

Delta: Δ

You can get around math mode's automatic italicizing in \LaTeX by using the argument `$\mathrm{formula here}$` , with your formula inside the curly brackets.

(Notice the use of the backticks here which enclose text that acts as code.)

So, $\text{Fe}_2^{2+}\text{Cr}_2\text{O}_4$ is written `$\mathrm{Fe}_2^{2+}\text{Cr}_2\text{O}_4$` .

3.2 Inline code

If you'd like to put the results of your analysis directly into your discussion, add inline code like this:

The `cos` of 2π is 1.

Another example would be the direct calculation of the standard deviation:

The standard deviation of speed in cars is 5.2876444.

3. *Methods*

One last neat feature is the use of the `ifelse` conditional statement which can be used to output text depending on the result of an **R** calculation:

```
The standard deviation is less than 6.
```

Note the use of `>` here, which signifies a quotation environment that will be indented.

As you see with `2π` above, mathematics can be added by surrounding the mathematical text with dollar signs.

Chapter 4

Results

4.1 An intro to R chunks

One of the most useful parts of *RMarkdown* is the ability to weave or ‘knit’ text (as we’ve seen in the previous three chapters) together with the code that produces tables and graphics for your final document. This has various advantages such as:

- *coherence*: for you, having your analysis and text together means keeping a coherent story together about why you did the analysis you did, how you got to your results, and what your interpretation of these results is
- *amendability*: this gives you an opportunity to update the code, for example by filtering the data in a different way, and rerun the code to see how any statistics, tables or graphs related to the data may have changed
- *reproducibility*: this also, importantly, supports a reproducible workflow such that you, or others, can rerun and test the code at a later point

To ‘knit’ such text and code together, code for particular graphs or tables should first be inserted into the text in ‘chunks’. These chunks are opened with three backticks and closed in a new line with another three backticks. The code that produces the desired output is included between these lines, which can include comments etc. A key part of these chunks are the chunk parameters, which are included in braces immediately following the first set of backticks. The first parameter indicates the programming language. The second parameter, which is optional and should be separated from the first parameter only by a space, is a chunk label. It is important that this chunk label includes no spaces and is unique to this chunk. Then, separated by commas,

4. Results

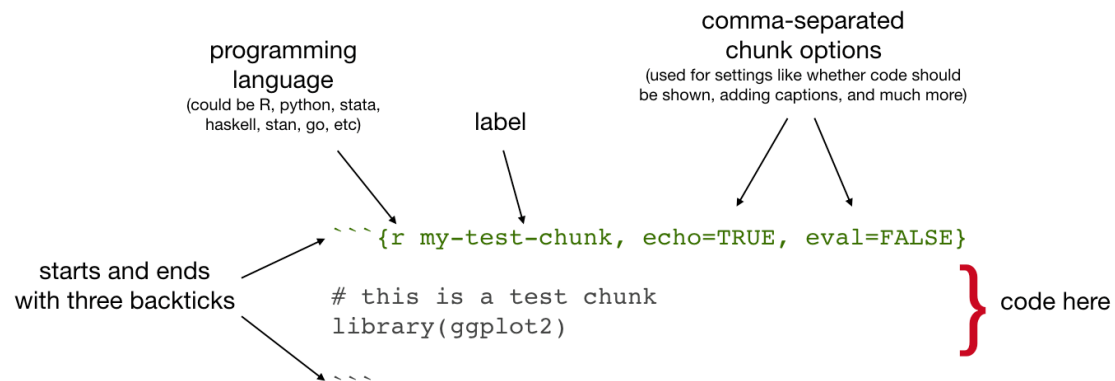


Figure 4.1: Chunk parts

are any additional parameters included. In the figure below, two examples are included: whether or not the code itself should be shown (`echo`) and whether or not the code should be evaluated or run (`eval`). Other parameters that we will see later include figure width, captions, etc.¹

In the code chunk shown in Figure 4.1, we can see that it is loading a package library. Functions and objects loaded or created in earlier chunks are cached by default and thus held on to for use in later chunks. It is therefore quite common to have a chunk early on in your chapter (or even your whole dissertation) that loads a number of the packages you need later on. As an example, below is a short code chunk that loads a set of **R** packages that we are going to rely on for the rest of this chapter.

```
# Load packages
library(dplyr)
library(ggplot2)
library(knitr)
```

When you click the **Knit** button above in RStudio a document will be generated that includes both content as well as the output of any embedded **R** code chunks within the document. If you need a graphic or tabular material to be part of the text, you can just put it inline. If you need it to appear in the list of figures or tables, it should be placed in a code chunk.

In the remainder of this chapter, we will see how to use code chunks to include figures, load and summarise data, and present results from your analysis.

¹More information is available at <https://yihui.org/knitr/options/>.

4. Results



Figure 4.2: IHEID logo

4.2 Including external figures

First, we will treat how to include figures in *RMarkdown* in more detail. If your thesis has a lot of figures, *RMarkdown* might behave better for you than your usual word processor, which can have a tendency to . One perk is that it will automatically number the figures accordingly in each chapter. You'll also be able to create a label for each figure, add a caption, and then reference the figure in a way similar to what we saw with tables earlier. If you label your figures, you can move the figures around and *RMarkdown* will automatically adjust the numbering for you. No need for you to remember! So that you don't have to get too far into \LaTeX to do this, a couple **R** functions have been created for you to assist. You'll see their use below.

4.2.1 Numbering and labelling figures

You don't need to number figures in *RMarkdown*; it'll do it automatically. And captioning a figure is awfully easy too. In the **R** chunk below, we will load in a picture that is stored as `iheid.png` in our `figures` directory. The `include_graphics()` function is from the `{knitr}` package, that does most of the heavy lifting here. We'll label the chunk 'iheidlogo' so that we can refer back to it later, and give the figure the caption "IHEID logo". You will see that here you do not need to include the parameter `echo=FALSE`, as the code including the figure is hidden by default.

```
include_graphics(path = "figures/iheid.png")
```

4.2.2 Referencing figures

Referencing figures in the text should be done with a little reference to the chunk label so that it will always refer to the right figure number, even if you add additional figures and plots before it. To reference the IHEID logo use a backslash, at-symbol, and then in parentheses

4. Results

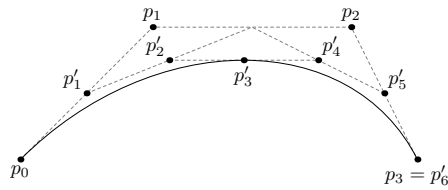


Figure 4.3: Subdiv. graph

`fig:chunk-label`, like so `\@ref(fig:iheidlogo)`. Usually some descriptor like “Figure”, “Fig.”, “Illustration” or other is added before this reference, so that it reads something like Figure 4.2. Note that the reference is hyperlinked in the resulting PDF, so that you can click on it to take you to the page where the original figure is printed.

4.2.3 Resizing figures

It is common to resize external image files so that they fit the format of the text. The most common way to do this was already demonstrated in the code chunk for Figure 4.1 above. There we used the parameter `out.width="\textwidth"` to, in this case, shrink the image to the width of the text, but this same parameter specification would also expand an image to fit the width of the text where possible.

Another option is the `out.extra` chunk option. This can be used to shrink or expand an image loaded from a file more specifically by specifying `scale=` ". Here we use the graph stored in the “subdivision.pdf” file, again found in the `figures` subdirectory. The output can be found in Fig. 4.3.

```
include_graphics("figures/subdivision.pdf")
```

We can also use the `out.extra` chunk option to enlarge figures, and even to rotate them any number of degrees around its axis. In Figure 4.4, we see an example where Figure 4.3 has been enlarged and flipped upside down.

```
include_graphics("figures/subdivision.pdf")
```

If you look closely at the chunk options, you will also see that two different captions have been provided. The `fig.scap` is a short caption that overrides the main caption, `fig.cap`, in the

4. Results

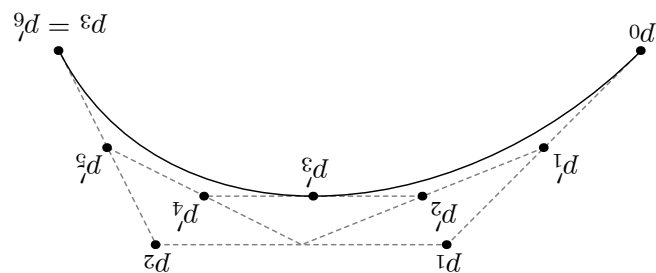


Figure 4.4: A Larger Figure, Flipped Upside Down

table of contents. This can be very useful where, for example, you need to describe the figure in a caption over several lines, details that do not need to be presented in the table of contents.

4.2.4 Placing figures

One thing that may be annoying is the way *RMarkdown* handles “floats” like tables and figures (it’s really \LaTeX ’s fault). \LaTeX will try to find the best place to put your object based on the text around it and, until you’re really, truly done writing, it is best to just leave it where it lies. There are some optional arguments specified in the options parameter of the `label` function. If you need to shift your figure around, it might be good to look here (you can click on the word ‘here’) on tweaking the options argument.

Spacing out your chunks between paragraphs can help, as it can give \LaTeX more options to find a suitable home for the figure or table, as \LaTeX would otherwise try and keep all the text together, saving the image for later. A last trick is to write `\clearpage` directly in your *RMarkdown* document. This gives \LaTeX a chance to catch up with all the ‘floats’ it has accumulated, and starts a new page.

4.3 Loading and exploring data

Sometimes it is not an existing image that must be imported, but instead you wish to create a table or plot of some data that you have imported. In this section, we're going to very quickly cover how to import internal and external data, how to manipulate and summarise the data, create plots from that data, and tabulate inferential results from that data.

4.3.1 Importing data

In some cases, the data you need might be available already in an **R** package. An example below is a very short code chunk that summarises a dataset that is built into **R**. Here it is particularly easy, as we do not even need to load the data (it is loaded by default).

```
summary(cars)
```

```
##      speed      dist
## Min.   : 4.0    Min.    :  2.00
## 1st Qu.:12.0    1st Qu.: 26.00
## Median :15.0    Median : 36.00
## Mean   :15.4    Mean    : 42.98
## 3rd Qu.:19.0    3rd Qu.: 56.00
## Max.   :25.0    Max.    :120.00
```

Othertimes you may need to load the data first before summarising it, with the function `data()`. There are an increasing number of data packages for **R** available, including several on a range of international and development topics.

The other option is to import data that resides in a file outside of **R**. Included in this template is a file called `flights.csv`. This file includes a subset of the larger dataset of information about all flights that departed from Seattle and Portland in 2014.² This subset includes only Portland flights and only rows that were complete with no missing values. Merges were also done with the `airports` and `airlines` data sets in the `pnwflights14` package to get more descriptive airport and airline names. We can load in this data set using the following commands:

²More information about this dataset and its **R** package is available at <https://github.com/ismayc/pnwflights14>.

4. Results

```
# flights.csv is in the data directory
flights <- read.csv("data/flights.csv")
```

The data is now stored in the data frame called `flights` in the cached environment for this *RMarkdown* document in **R**. To get a better feel for the variables included in this dataset we can use a variety of functions. Here we can see the dimensions (rows by columns) and also the names of the columns.

```
dim(flights)
```

```
## [1] 398 16
```

```
names(flights)
```

```
## [1] "month"      "day"        "dep_time"   "dep_delay"  "arr_time"
## [6] "arr_delay"  "carrier"    "tailnum"    "flight"     "dest"
## [11] "air_time"   "distance"   "hour"       "minute"     "carrier_name"
## [16] "dest_name"
```

Another good idea is to take a look at the dataset in table form. With this dataset having more than 20,000 rows, we won't explicitly show the results of the command here, so we'll use the `eval=FALSE` chunk option to make sure the following is not run when you 'knit' the document. Still, you can press the green play button at the right of the chunk to run the chunk on demand, bringing up a new tab showing the data.

```
View(flights)
```


4. Results

4.3.2 Manipulating and summarising data

While not required, it is highly recommended you use the `dplyr` package to manipulate and summarize your data set as needed. It uses a syntax that is easy to understand using chaining or ‘pipe’ operations (`%>%`). Below I’ve created a few examples of using `dplyr` to get information about the Portland flights in 2014. The example we show here does the following:

- Selects only the `carrier_name` and `arr_delay` from the `flights` dataset and then assigns this subset to a new variable called `flights2`.
- Using `flights2`, we determine the largest arrival delay for each of the carriers.

```
flights2 <- flights %>%  
  select(carrier_name, arr_delay)  
max_delays <- flights2 %>%  
  group_by(carrier_name) %>%  
  summarize(max_arr_delay = max(arr_delay, na.rm = TRUE))
```

A useful function in the `knitr` package for making nice tables in *RMarkdown* is called `kable`. It is much easier to use than manually entering values into a table by copying and pasting values into Excel or \LaTeX . This again goes to show how nice reproducible documents can be! The chunk option `results="asis"` makes sure the table is produced, not the code to create the table. Tables created with the `kable()` function (in `{knitr}`) can be extended in many useful (and pretty) ways with the recommended `{kableExtra}` package.

```
kable(max_delays,  
  col.names = c("Airline", "Max Arrival Delay"),  
  caption = "Maximum Delays by Airline",  
  caption.short = "Max Delays by Airline",  
  longtable = TRUE,  
  booktabs = TRUE  
)
```

4. Results

Table 4.1: Maximum Delays by Airline

Airline	Max Arrival Delay
Alaska Airlines Inc.	181
American Airlines Inc.	72
Delta Air Lines Inc.	84
Frontier Airlines Inc.	68
Hawaiian Airlines Inc.	6
JetBlue Airways	172
SkyWest Airlines Inc.	103
Southwest Airlines Co.	315
United Air Lines Inc.	135
US Airways Inc.	347
Virgin America	22

Note that instead of adding the caption details in the chunk options, we will be adding this in the `kable()` function, which then passes this on up. The `caption.short` argument is used to include a shorter title to appear in the List of Tables. The last two options make Table 4.1 a little easier-to-read.³

We can further look into the properties of the largest value here for Alaska Airlines Inc. To do so, we can isolate the row corresponding to the arrival delay of 70 minutes for Alaskan in our original `flights` dataset. We see that the flight occurred on January 1st and departed a little after 1:30 am on its way to Anchorage.

```
flights %>%
  dplyr::filter(
    arr_delay == 70,
    carrier_name == "Alaska Airlines Inc."
  ) %>%
  select(-c(
    month, day, carrier, dest_name, hour,
    minute, carrier_name, arr_delay
  ))
```

³Note that we can create references/links to tables using a very similar syntax here to that with figures above. We can preface the reference with “Table” or “Tab.” or so, and then create the reference with the format `\@ref(tab:chunk-label)`.

4. Results

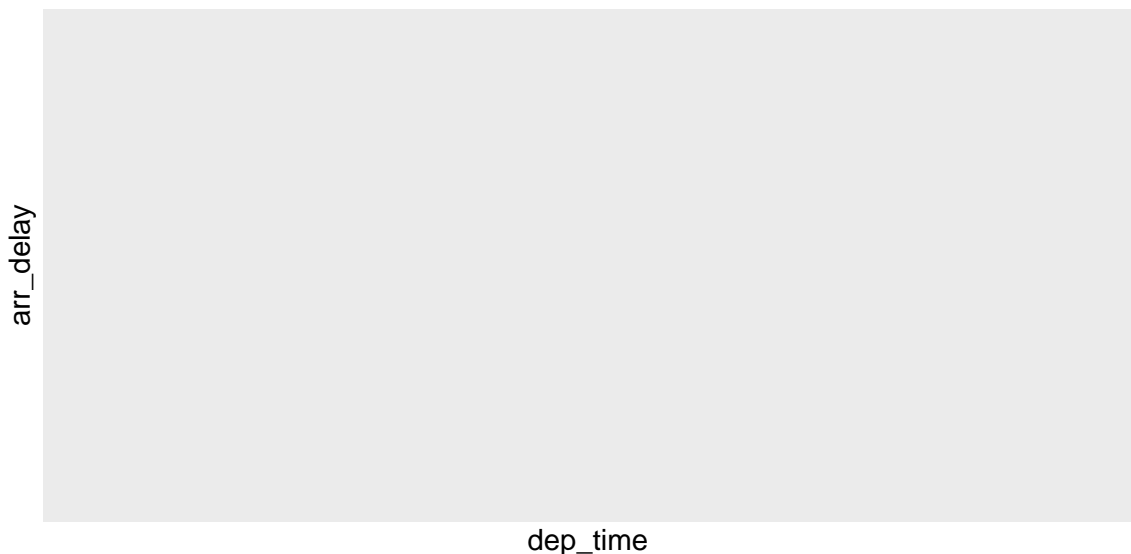
```
##   dep_time dep_delay arr_time tailnum flight dest air_time distance
## 1         1         96      235 N508AS   145  ANC       194      1542
```

4.3.3 Creating plots

Once data has been loaded or imported and manipulated or filtered as required, a common task is to visualise some key dimensions of the data to inform the reader. Here the package `{ggplot2}` plays nicely with `{dplyr}` and other `{tidyverse}` packages. `{ggplot2}` produces beautiful, high-quality academic visuals, and has been extended with a huge range of add-ons for a very broad variety of visualisation styles no matter what kind of data you have.

We're going to continue playing with the `flights` dataset from Chapter 4.3.1. First, let us show how we can visualize the arrival delay of all departing flights from Portland on March 3rd against time of departure. Note that once you open the plotting function with `ggplot()`, additional elements are chained not with the pipe operator `%>` but `+`. Considerably more help than I can offer here on how to use `ggplot()` can be found online.

```
flights %>%
  dplyr::filter(month == 3, day == 3) %>%
  ggplot(aes(x = dep_time, y = arr_delay)) +
  geom_point()
```



4. Results

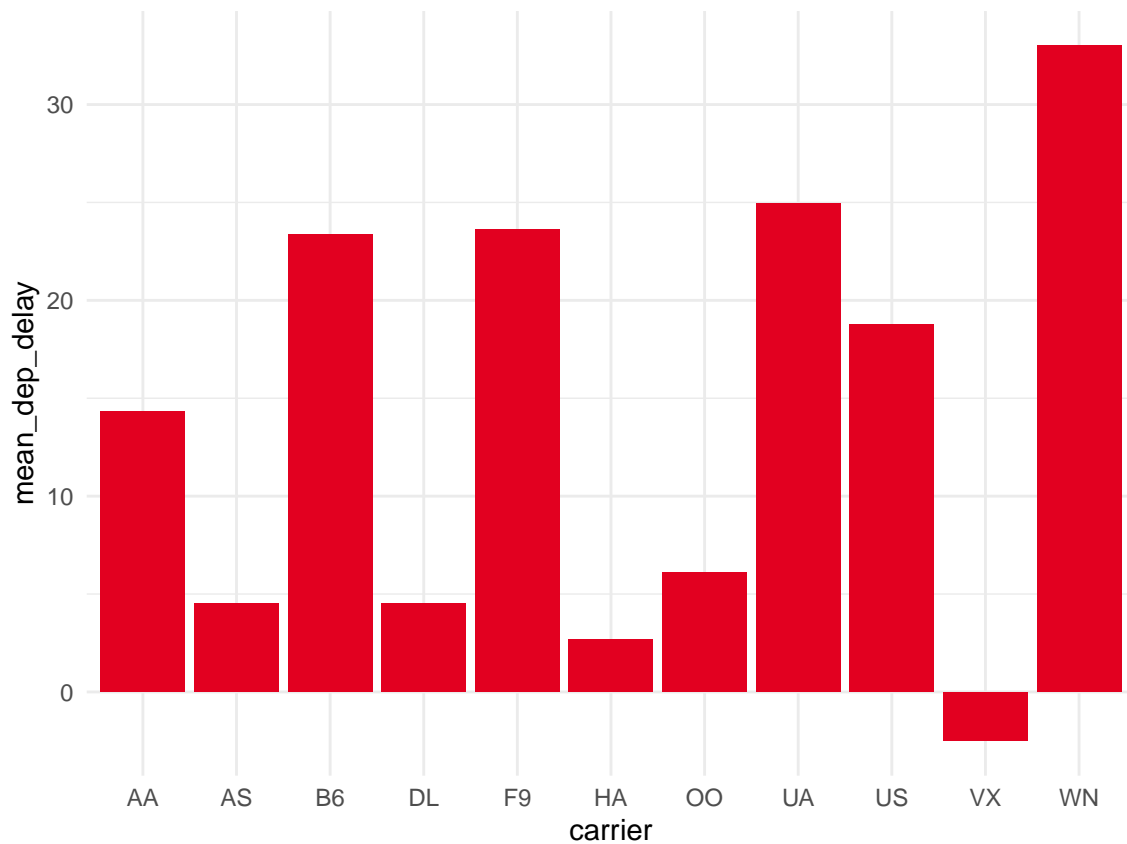


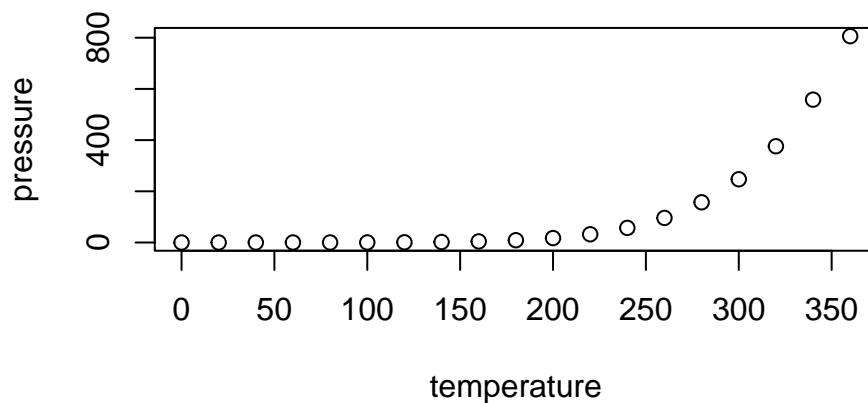
Figure 4.5: Mean Delays by Airline

Next Figure 4.5 presents a bar graph with the mean flight departure delays by airline from Portland for 2014. A table linking these carrier codes to airline names is available at <https://github.com/ismayc/pnwflights14/blob/master/data/airlines.csv>.

```
mean_delay_by_carrier <- flights %>%  
  group_by(carrier) %>%  
  summarize(mean_dep_delay = mean(dep_delay))  
ggplot(mean_delay_by_carrier, aes(x = carrier, y = mean_dep_delay)) +  
  geom_bar(position = "identity", stat = "identity",  
           fill = iheiddown::iheid_palette("IHEID", 1)) +  
  theme_minimal()
```

You don't have to use `{ggplot2}` though. For example, here is a way to use the base **R** graphics package to produce a plot using the built-in `pressure` dataset:

4. Results



4.3.4 Tabulating inferential results

Another common task researchers have is the presentation of results obtained from applying various statistical methods to their data. Since **R** makes available a very broad range of statistical methods, and all too often these output objects in different structures and formats, there is unfortunately no single package that reliably and prettily prints results. Still, I can offer a few suggestions here that cover as much as possible, in addition to `{kable}` and `{kableExtra}` mentioned above.

- `{stargazer}` for well-formatted regression tables, with multiple models side-by-side, as well as for summary statistics tables, data frames, vectors and matrices.
- `{xtable}` offers a straightforward but extensible framework.
- `{memisc}` provides tools for the management of survey data, as well as the creation of tables of summary statistics and model estimates.
- `{Hmisc}` for data description and predictive modeling.
- `{finalfit}` brings together the day-to-day functions we use to generate final results tables and plots when modelling.
- `{tableone}` i.e., description of baseline patient characteristics.
- `{flectable}` provides a framework for easily create tables for reporting and publications (PDF documents only with package `{pagedown}`).
- `{huxtable}` creates LaTeX and HTML tables with a friendly, modern interface.

4. Results

- `{texreg}`
- `{apsrtable}`
- `{arsenal}`

I (James Hollway) would welcome any feedback on any other packages you find useful (more are being released all the time), and which of these worked for your purposes.

4.3.5 Tables from external data

In addition to the tables that can be automatically generated from data in **R**, you can also create tables directly using *pandoc*. This might be useful if you don't have values specifically stored in **R**, but you'd like to display them in table form.

Below is an example.

Pay careful attention to the alignment in the table and hyphens to create the rows and columns.

More information is available at <https://pandoc.org/README.html#tables>.

Table 4.2: Correlation of Inheritance Factors for Parents and Child

Factors	Correlation between Parents & Child	Inherited
Education	-0.49	Yes
Socio-Economic Status	0.28	Slight
Income	0.08	No
Family Size	0.18	Slight
Occupational Prestige	0.21	Slight

The addition of the `(\#tab:inher)` option to the end of the table caption allows us to then make a reference to `Table \@ref(tab:label)`. Note that this reference could appear anywhere throughout the document after the table has appeared.

Chapter 5

Conclusion

In sum, `{iheiddown}` offers an easy way to write IHEID-consistent theses, but is enormously extensible and adaptable, allowing students to craft their own dissertations and other documents.

5.1 Using `iheiddown` for proposals

As an example of this, let us consider how one might begin using `iheiddown` from the start of a masters or doctoral dissertation, and not just at the end while ‘writing up’ (a good idea in any case).

One feature often requested by supervisors from DDPs and MPTs is the preparation of a plan about how and when the various tasks associated with the project will be completed. Your supervisor may even ask for this to be presented in a table or a Gantt chart.

We have covered tables in the previous chapter. Here I want to offer a quick vignette about how you can create a Gantt chart that outlines the temporal progression you expect to make. We will use the `{ganttrify}` package to do this.

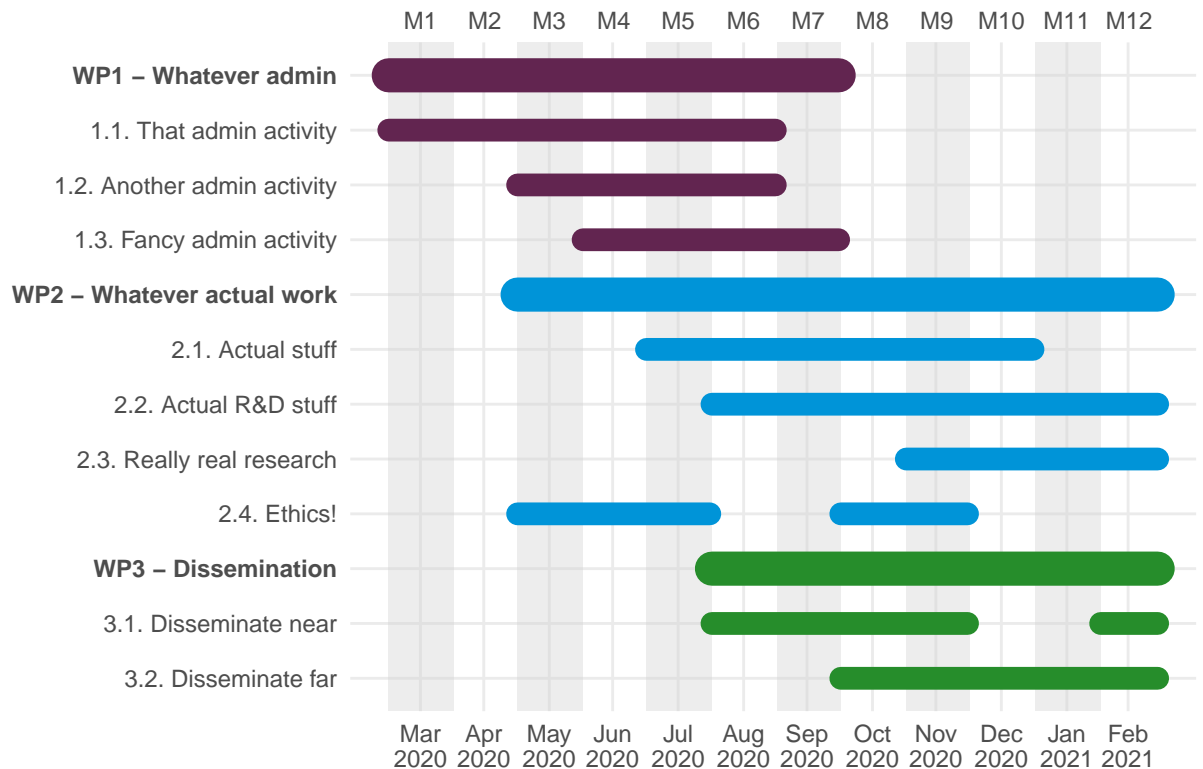
```
library("ganttrify")
ganttrify(project = ganttrify::test_project,
  project_start_date = "2020-03",
  colour_palette = iheiddown::iheid_palette("Centres",
  type = "continuous")
)
```

5. Conclusion

```
## Registered S3 method overwritten by 'wesanderson':
```

```
## method      from
```

```
## print.palette iheiddown
```



5.2 Additional resources

- *Markdown* Cheatsheet
- *RMarkdown*
 - Reference Guide
 - Cheatsheet
 - For newbies
- *RStudio IDE*
 - Official website
 - Cheatsheet

5. Conclusion

- dplyr
- ggplot2
 - Documentation
 - Cheatsheet
- bookdown

5.3 Anything else?

If you'd like to see examples of other things in this template, please add them as feature requests to the [iheiddown](#) website. We love to see people using *RMarkdown* for their theses, and are happy to help.

Appendix: The Echoes of the Code

The goal of this appendix is to echo the code you used in your thesis for a greater sense of transparency and replicability of your research. Note that `ref.labels` can be set to any label. Hence, you can filter the code you want replicated in the appendix by setting labels to the desired code chunks in the various chapters. See this excellent resource for more information.

This might be particularly useful when you perform model selection to output intermediary steps here instead of in the code to avoid cluttering your report.

```
knitr::write_bib(c(.packages(), "bookdown"), "bib/packages.bib")
knitr::include_graphics("figures/chunk-parts.png")
# Load packages
library(dplyr)
library(ggplot2)
library(knitr)
include_graphics(path = "figures/iheid.png")
include_graphics("figures/subdivision.pdf")
include_graphics("figures/subdivision.pdf")
summary(cars)
# flights.csv is in the data directory
flights <- read.csv("data/flights.csv")
dim(flights)
names(flights)
View(flights)
flights2 <- flights %>%
  select(carrier_name, arr_delay)
```

Appendix

```
max_delays <- flights2 %>%
  group_by(carrier_name) %>%
  summarize(max_arr_delay = max(arr_delay, na.rm = TRUE))
kable(max_delays,
  col.names = c("Airline", "Max Arrival Delay"),
  caption = "Maximum Delays by Airline",
  caption.short = "Max Delays by Airline",
  longtable = TRUE,
  booktabs = TRUE
)
flights %>%
  dplyr::filter(
    arr_delay == 70,
    carrier_name == "Alaska Airlines Inc."
  ) %>%
  select(-c(
    month, day, carrier, dest_name, hour,
    minute, carrier_name, arr_delay
  ))
flights %>%
  dplyr::filter(month == 3, day == 3) %>%
  ggplot(aes(x = dep_time, y = arr_delay)) +
  geom_point()
mean_delay_by_carrier <- flights %>%
  group_by(carrier) %>%
  summarize(mean_dep_delay = mean(dep_delay))
ggplot(mean_delay_by_carrier, aes(x = carrier, y = mean_dep_delay)) +
  geom_bar(position = "identity", stat = "identity",
    fill = iheiddown::iheid_palette("IHEID", 1)) +
  theme_minimal()
```

Appendix

```
plot(pressure)
library("gantrify")
gantrify(project = gantrify::test_project,
  project_start_date = "2020-03",
  colour_palette = iheidown::iheid_palette("Centres",
  type = "continuous")
)
```

Appendix: The Echoes of the Code redux

Add as many appendices as you like.

References

- Darwin, Charles (1859). *On the Origin of Species by Means of Natural Selection or the Preservation of Favoured Races in the Struggle for Life*. London: John Murray.
- Hollway, James (2020). *iheiddown: A RMarkdown class for IHEID dissertations*. R package version 0.0.1. URL: <https://github.com/jhollway/iheiddown>.
- Lottridge, Danielle et al. (2012). “Browser design impacts multitasking”. In: *Proceedings of the Human Factors and Ergonomics Society 56th Annual Meeting*. ISBN: 9780945289418. DOI: 10.1177/1071181312561289.
- R Core Team (2022). *R: A Language and Environment for Statistical Computing*. R Foundation for Statistical Computing. Vienna, Austria. URL: <https://www.R-project.org/>.
- Satchell, Christine and Paul Dourish (2009). “Beyond The User: Use And Non-Use in HCI”. In: *Proceedings of the Annual Conference of the Australian Computer-Human Interaction Special Interest Group (OZCHI '09)* November, pp. 9–16. ISSN: 14712970. DOI: 10.1145/1738826.1738829. URL: <http://douri.sh/publications/2009/nonuse-ozchi.pdf>.
- Shea, Nicholas et al. (2014). “Supra-personal cognitive control and metacognition”. In: *Trends in Cognitive Sciences* 18.4, pp. 186–193. ISSN: 1364-6613. DOI: 10.1016/j.tics.2014.01.006. URL: <http://dx.doi.org/10.1016/j.tics.2014.01.006>.
- Solomon, Nick (2020). *thesisdown: An updated R Markdown thesis template using the bookdown package*. R package version 0.0.2.
- Von Goethe, Johann Wolfgang (1829). *Wilhelm Meisters Wanderjahre oder die Entsagenden*. de. Cotta.
- Wu, Tim (2016). *The Attention Merchants: The Epic Scramble to Get Inside Our Heads*. Knopf Publishing Group.

References

Xie, Yihui (2016). *bookdown: Authoring Books and Technical Documents with R Markdown*.

ISBN 978-1138700109. Boca Raton, Florida: Chapman and Hall/CRC. URL:

<https://github.com/rstudio/bookdown>.

Xie, Yihui (2022). *bookdown: Authoring Books and Technical Documents with R Markdown*. R

package version 0.26. URL: <https://CRAN.R-project.org/package=bookdown>.